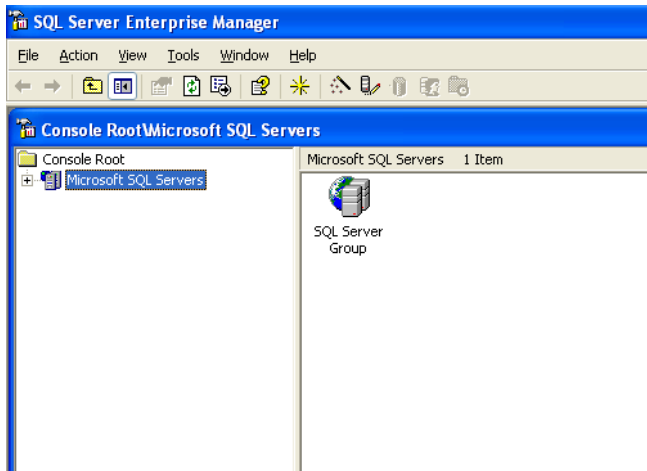


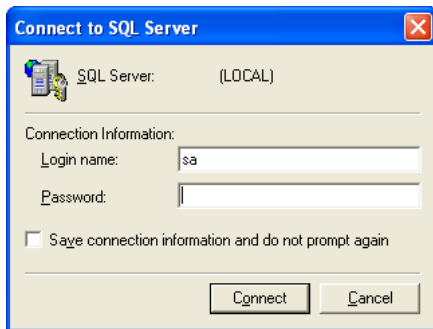
RBS Systems Specialist Co.

MS-SQL 2000 Backup Procedure

1. Go to Start > All Programs > Microsoft SQL Server > Enterprise Manager
2. Expand + Sign



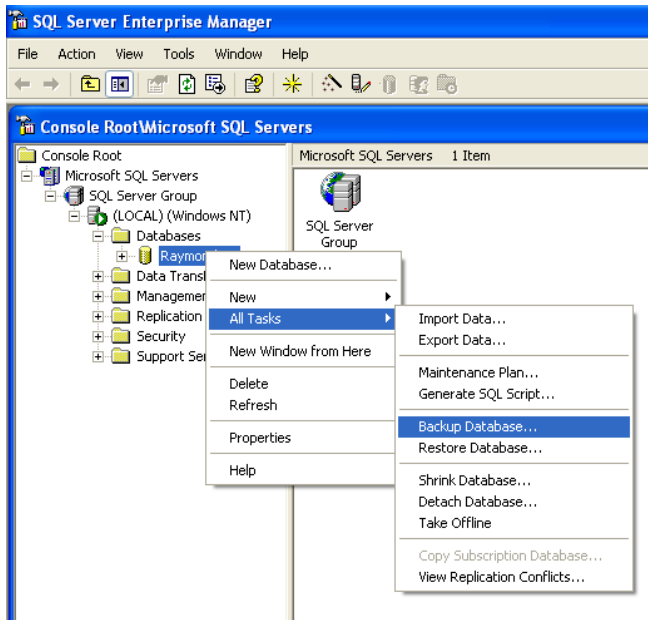
3. Enterprise Manager will prompt you to enter "SA" password. Please enter 2006 for your password.



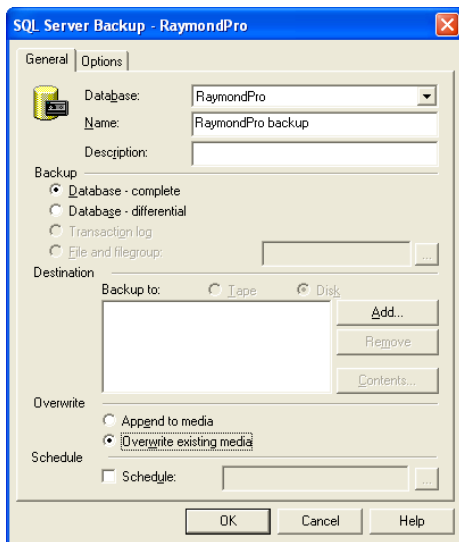
4. Expand Databases



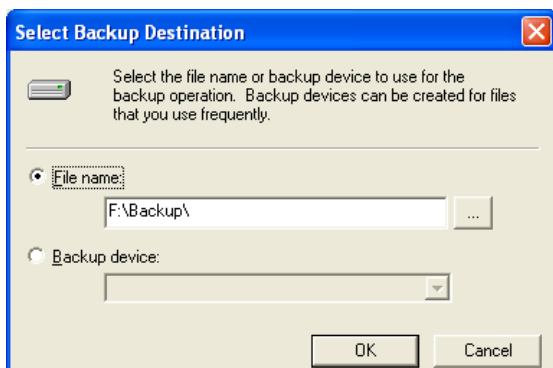
5. Right Click on "RaymondPro" Database and go to All Task > Backup Database.



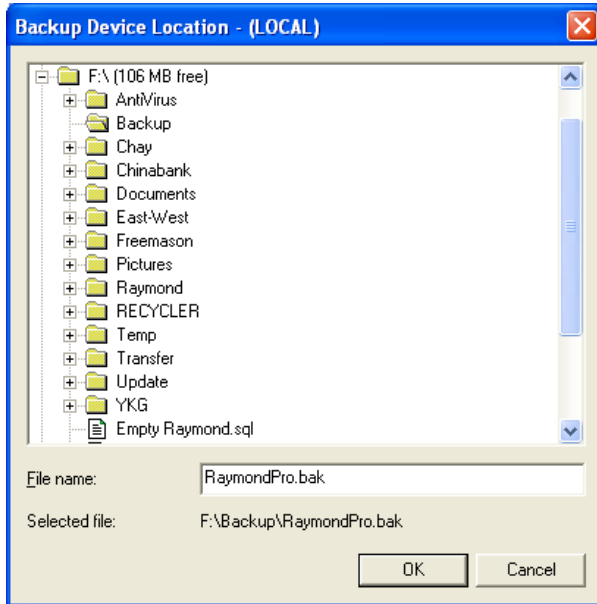
6. Select "Overwrite Database" Option and Click "Add..." Button.



7. Click on the "..." Button to Backup Device Location Window.

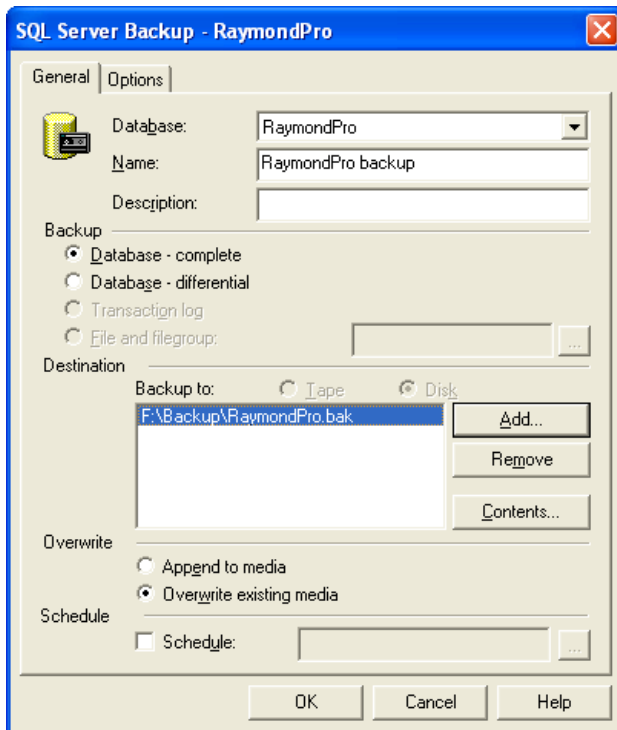


Select the Path of your Removable Media Device and Type the File Name of the Backup e.g. "RaymondPro.bak"



Click on "OK" Button on the Backup Device Location. Click on "OK" Button again at the Select Backup Destination Window.

- After the Correct Specified Path of the Backup Location, Click on OK Button at the SQL Server Backup Window, a window showing the progress of your backup will appear, please wait for the "Success" message to verify that the backup is successfully saved.



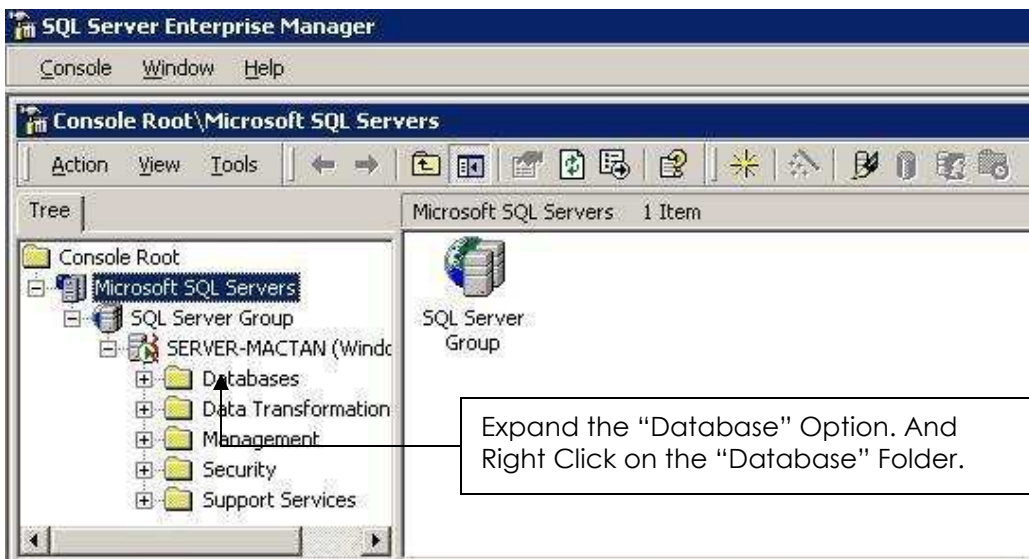
RBS System Specialist Co.

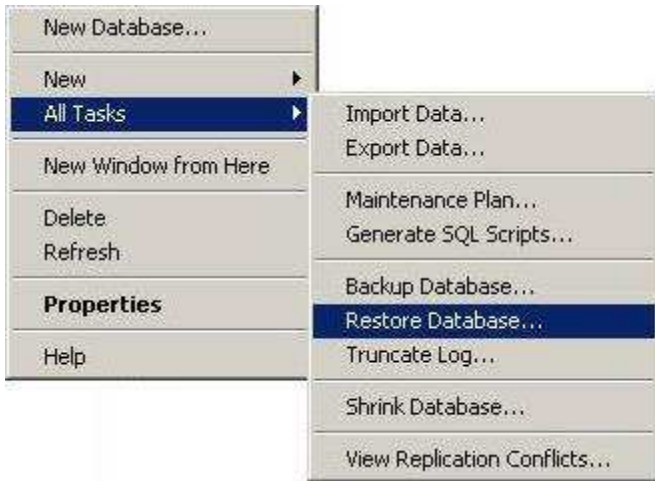
MS SQL Database – Restore Backup File Procedure

1. Go to Windows Start
2. All Programs
3. Microsoft SQL Server
4. Click / Run Enterprise Manager
5. Follow these steps below:

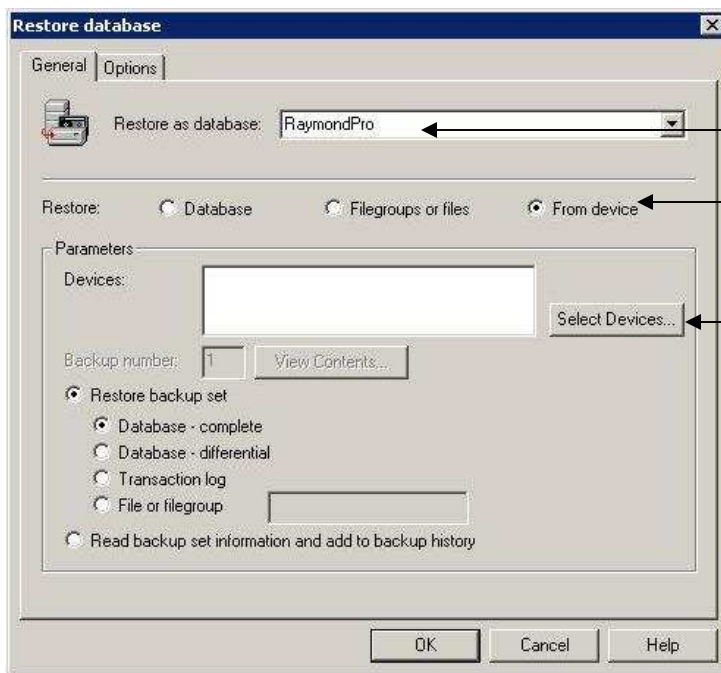


Log-in to SQL Server, ask RBS System Specialist or your company System Administrator for an access to MS SQL Server Database.





Command Option will appear, move your mouse on All Task, and click on "Restore Database".



Type the Database Name you want to Restore.

Click on "From Device" Option.

Click on "Select Device" Command Button.

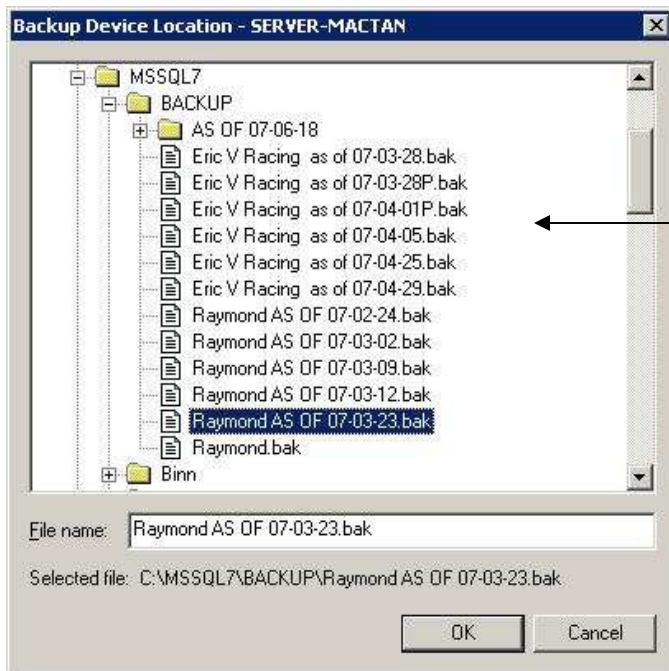


This New Window will appear.

Click on "Add..." Command Button.



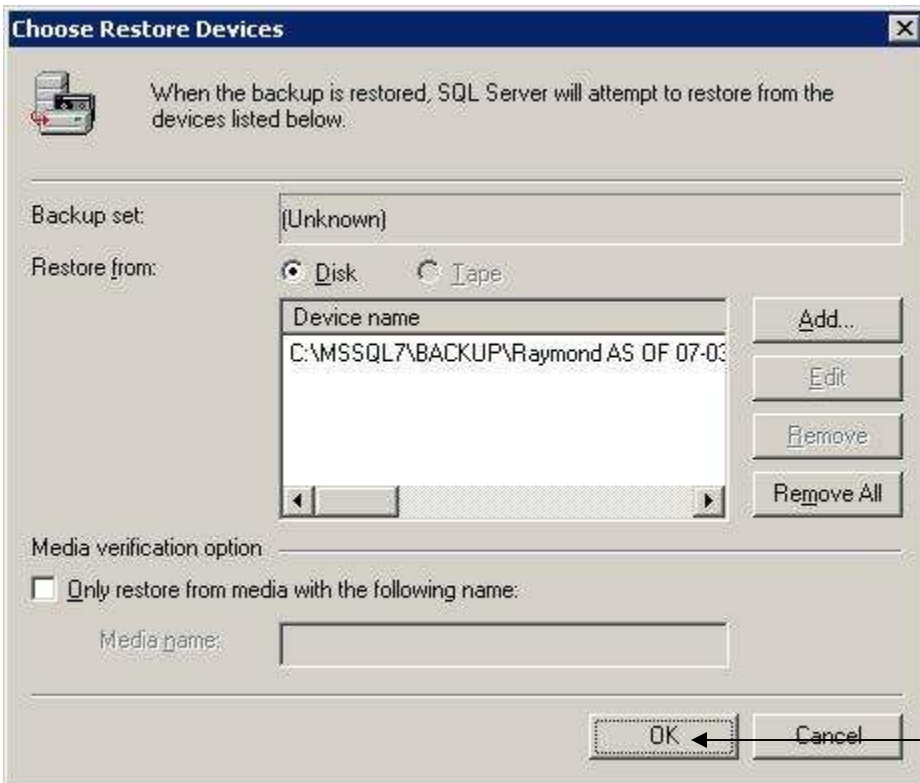
Click on "..."
Command Button,
to show the file
selection window.



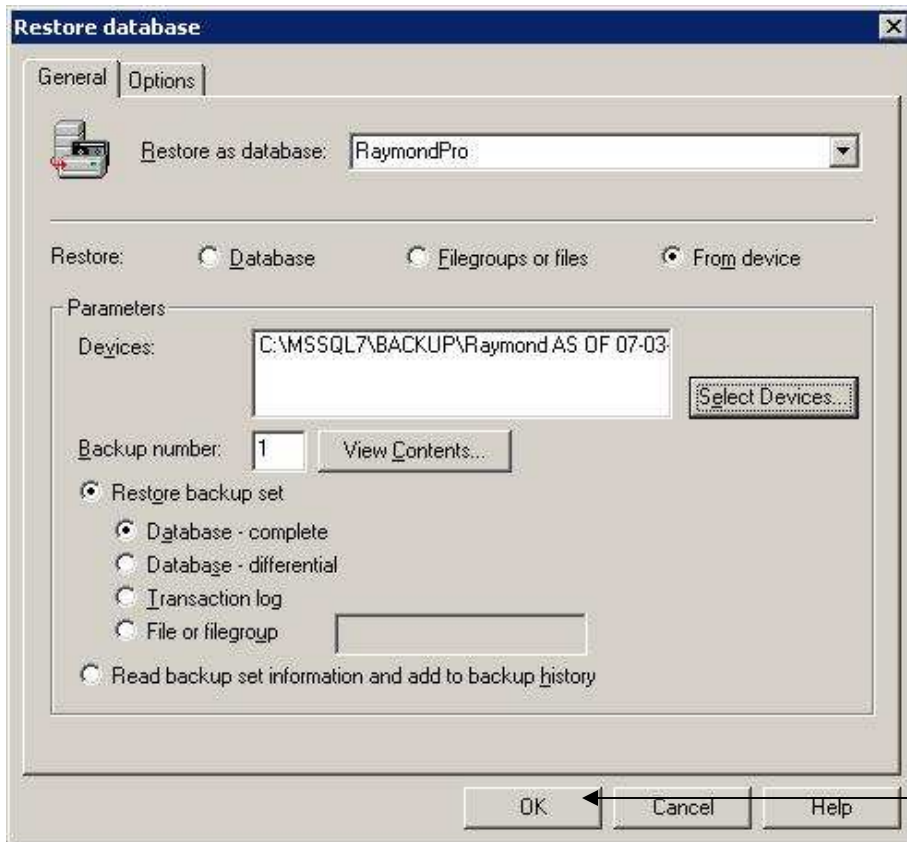
Backup Device Location
window will appear, select
the backup (.bak) file you
want to restore. Click OK
button and you're on your
way to restoring the
database.



Click on "OK"
Command Button.



Click on "OK" Command Button Again.



Click on "OK" Command Button One Last Time.
Database Restoration is Complete.

RBS System Specialist

MS SQL Database – Restore MDF File Procedure

Copy Database to the MSSQL Folder:

1. Go to Windows Start
2. Click / My Computer
3. Go to MSSQL Data folder (e.g. SQL7 is located in "C:\MSSQL7\DATA")
4. Paste the recovered MDF and LDF file in the MSSQL data folder
(e.g. RaymondPro_Data.mdf and RaymondPro_Log.ldf)

Start Database Attached Process:

1. Go to Windows Start
2. All Programs
3. Microsoft SQL Server
4. Click / SQL Query Analyzer
5. Login as "sa"
6. Run the Query Below:

```
EXEC sp_attach_db @dbname = N'RaymondPro',  
@filename1 = N'C:\MSSQL7\DATA\RaymondPro_Data.mdf',  
@filename2 = N'C:\MSSQL7\DATA\RaymondPro_Log.ldf'
```